

# Farm Retirement

# AUCTION

2352 4th St SW,  
Washburn, ND

TIMED ONLINE

Steffes Group, Inc.



Built on Trust.

Opens: Tuesday, December 8

**CLOSES: TUESDAY, DECEMBER 15 | 10AM** 2020

**PREVIEW:** Wednesday, December 2 – Tuesday, December 15 from 9AM – 5PM  
**LOADOUT:** December 15 after auction closes – 5PM and December 16 – 23 from 9AM – 5PM

**JEFF LEIDHOLM**  
701.315.0185

## TRACTORS

2011 Challenger MT865C, deluxe cab, buddy seat, powershift, 5 hyd., big 1000 PTO, set up for John Deere GPS, power mirrors, wide swing drawbar, front tow cable, front weights, 36" tracks, 3,660 hrs., New tracks Spring of 2020, S/NAGCC0865CNWKG1224  
1997 John Deere 8100, powershift, 4 hyd., 3 pt., 540/1000 PTO, integrated auto steer, 380/90R46 duals, 7,948 hrs., S/NRW8100P003335

## GPS EQUIPMENT

John Deere 2630 GS3 display, AutoTrac, Row Sense, Section Control, S/NPCGU2UA362052  
John Deere 2630, GS3, SF1, S/NPCGU2UA394712  
John Deere StarFire 3000 450 receiver, S/NPCGT3TA383525  
John Deere StarFire 3000 receiver, S/NPCGT3TA312412

## HARVEST EQUIPMENT

2015 John Deere S670, 2WD, premium cab, Contour-Master, 2 spd., HD high torque variable spd. feeder house, ProDrive, GS3 touch screen 7" color display, AutoTrac ready, Harvest monitor, Big Top hopper ext., 26-1/2" unloading auger, TriStream rotor, fine cut chopper, S Series chaffer, large bar and small wire concaves, 520/85R42 front duals, 28L-26 rear tires, 1,151 sep. hrs., 1,640 engine hrs., S/N1H0S670SLF0775557  
2013 John Deere 635FD flex draper head, 35', hyd. fore/aft, finger reel, return to height in rigid mode, Cray AWS-2000 air reel, single pt. hookup, S/N1H0635FDCCD0755432  
2013 John Deere 608C chopping corn head, 8x30", RowSense, hyd. deck plates, knife rolls, (8) stalk stoppers, S/N1H00608CHCC755347  
Universal bean head, 30', perforated bottom, (2) 14" Sund pickups, S/N150305632

## HEADER TRAILERS

Unverferth AWS-42 header trailer, 42', 11L-15FI tires, S/NA57260282  
Header trailer, 42', 7.00R15 tires  
Header trailer, 30', 7.00R15 tires, pin hitch

## SPRAYERS

2013 John Deere 4940 self-propelled high clearance sprayer, 120' booms, 1,200 gal. SS tank, integrated auto steer, StarFire 3000 with SF1 & RTK, 2630 display, BoomTrac Pro, auto boom height, 20" nozzle spacing, 5-nozzle bodies, fence row nozzles, 11-section control, rinse tank, SS inductor tank, high flow pump, HID lights, hyd. tread adj., 380/105R50 rear duals, 739 spray hrs., 2,040 engine hrs., S/N1N04940XKC0023489  
2003 Spray-Air 3600 high clearance pull-type sprayer, 110' booms, 1,200 gal. poly tank, triple nozzle bodies, rinse tank, adj. axles, 14.9R46 tires, S/N36140

## PLANTER

2013 John Deere 1770NT CCS planter, 16x30", 2 pt., pneumatic down pressure, RowCommand, ground drive 2x2 liquid fertilizer in-furrow, 500 gal. fertilizer tank, trash whippers, onboard air compressor, rear view camera, hyd. markers, tow-behind hitch, corn & medium edible bean discs, S/N1A01770YDM755692

## AIR DRILLS

2008 Horsch 60-15 air drill, 60', 15" spacing, set up for John Deere screen, GreenStar auto rate controller, 4-section control, disc levelers, Raven NH3 system, single shoot Dutch openers w/NH3, Yetter trash coulters, floating hitch, 7.75-15 packer wheels, Horsch 500 bu. 3-compartment commodity cart, scale, fill auger, camera in each tank, Torpedo hitch, 520/85R42 tires, duals on cart, cart S/NCC500109, drill S/NPS0111  
Concord air drill, 40', set up for 30" spacing, disc levelers, NH3, diesel fan drive, Concord 2400 tow-between 240 bu. commodity cart, 2-compartment, 23.1-26 tires, S/NATD-1231

## TILLAGE EQUIPMENT

2000 Flexi-Coil S75 coil packer, 50', hyd. 5-section fold, long hitch, tandems on main, wing gauge wheels, S/NS75-103019-00  
Morris Concept 2000 chisel plow, 50', 12" spacing, 4-rank, NH3 capable, NH3 knives, rear winch, walking tandems, Morris 4-bar harrow  
Yetter coulters disc, 20', 3 pt.  
IHC chisel plow, 17', hyd.

## SEMI TRACTORS

2010 Peterbilt 384 tandem axle, day cab, C13 Caterpillar, 475 hp., power enhanced, 10 spd., engine brake, air susp., stationary 5th wheel, cruise, air dump, 12,000 lb. fronts, 38,000 lb. rears, 182" WB, 11R22.5 tires, aluminum wheels, 13,700 hrs., 518,700 miles  
2002 Freightliner tandem axle, day cab, Series 60 Detroit, 435 hp., 10 spd., engine brake, air susp., air slide 5th, air dump, receiver hitch, 12,000 lb. front, 40,000 lb. rear, 174" WB, 11R22.5 tires, aluminum front & steel rear wheels, 642,853 miles

## HOPPER BOTTOM TRAILERS

2012 Wilson Pacesetter DWH-551 tandem axle hopper bottom, 40'x66", ag hopper, Shur-Lok electric roll tarp, air susp., 11R24.5 tires on aluminum wheels  
1997 Magnum tandem axle hopper bottom, 36', ag hopper, Shur-Lok manual roll tarp, spring susp., set up for rear auger, 11R24.5 tires

## PICKUP & SUV

2008 Ford F350 Lariat, crew cab, 6.4L Powerstroke diesel, power enhanced, automatic, 4WD, leather, rear camera, cruise, grill guard, step bars, 8' box, 5th wheel ball hitch, 275/70R18 tires, 173,000 miles, S/N03794  
2002 GMC Yukon XL1500 SUV, V8, automatic, 4WD, leather, (2) rear seats, cruise, running boards, 245/75R16 tires, 221,286 miles

## WHEEL LOADER & FORKS

1995 Caterpillar 936F wheel loader, CAH, Balderson quick tach, 2,775 yd. bucket, 20.5-25 tires, 11,450 hrs., S/N84J00809

Balderson industrial forks w/quick attach

## HOPPER BINS & CONVEYOR

(2) Meridian M1620 hopper bins, 4,000 bu., poly-lined, aeration tube, ground frame, S/N6220130442243, S/N6220140245553  
2018 Brandt 1545 GrainBelt conveyor, 45'x15", self-propelled, Kohler 20 hp. motor

## FERTILIZER EQUIPMENT

Buhler Farm King 1700 liquid fertilizer cart, 1,600 gal. tank, 320/85R38 tires, S/N 170013000108  
Horvick 1,200 gal. fertilizer tank, Honda 2" pump, on 4-wheel trailer, ST235/80R16 tires  
5,000 gal. poly liquid fertilizer tank

## NH3 TANKS

(2) 1,500 gal. NH3 tank, adj. axles, 14L-16.1SL tires, S/N1206152, S/N283278  
1,500 gal. NH3 tank, 14L-16.1SL tires, S/N913421  
(2) 1,000 gal. NH3 tank, one w/adj. axles, 11L-15SL tires  
1,000 gal. NH3 tank, adj. axle, 12.5L-15SL tires

## OTHER EQUIPMENT

Degelman RP6000 hyd. rockpicker, 3-bat, rear shield, S/N22441  
Orthman 1Tripr strip tiller, 8x30", John Blue variable rate liquid fertilizer w/John Deere rate controller, site glass, S/N5206-5  
Harriston bean knifer, 8x30", 3 pt.  
IHC 133 toolbar, 20' w/Yetter coulters, 16" spacing, 3 pt.  
(7) sections for Summers 40' coulters disc, 10" spacing  
Gravity wagon, 150 bu.  
Generac generator, 60/30KW, PTO, on pull-type 2-wheel cart w/implement tires, S/N0512724

## PARTS & FARM SUPPORT ITEMS

Sickle drive, for John Deere 635FD, rebuilt  
Corn chaffer for John Deere 9770, used one season  
Raven NH3 Super Cooler, rate controller  
NH3 adj. receiver hitch  
180 gal. service tank, single compartment, (2) electric pumps w/top tool storage  
WEG electric motor, 10 hp, 3 phase  
Vertical irrigation motor, 30 hp.  
(2) 40' aeration tubes w/(1) fan  
Toolbox  
Pallet with asst. items: Honda motor, 70 hp., rope pull start; moisture probe; (5) spikes

## CONTACT

**JEFF, 701.315.0185,**  
**STEVE, 701.460.1400,**  
or Terry Moe at Steffes  
Group, 701.580.2426

**STEVE LEIDHOLM**  
701.460.1400

## DISC

Wishek 842 rock flex disc, 16', floating hitch, solid tandems, 27" front blades, 27-3/4" rear blades, spring cushion gangs, mud scrapers, S/N1249316

## ROW CROP & BEAN EQUIPMENT

Orthman 9300 cultivator, 12x30", 3 pt., outside hyd. fold, dual gauge wheels, front coulters, S/N496-65  
Harriston outside (8) row knives of a 16-row bean knife, hyd. fold

## NH3 TANKS

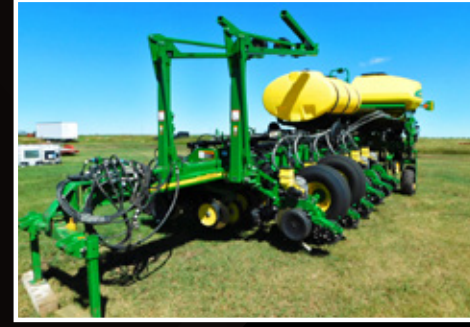
(2) 1,500 gal. NH3 tank on trailer, 14L-16.1 tires, S/N4160, S/N4165  
1,000 gal. NH3 tank on trailer, 12.5L-16 tires

## HYD. CRANE

Ag Crane hyd. crane, 3 pt., 3,000 lbs. ext. lift cap., 20,000 lbs. inside lift cap., pallet forks, bag lift assist

## AERATION & FARM SUPPORT ITEMS

(2) Sukup centrifugal fans, 30 hp., 3 phase, S/N48148, S/N48150  
2011 fertilizer tank, 1,720 gal., on metal stand, 2" fittings  
(2) electric motors, 10 hp., 3 phase, S/NGSP4076063025, S/NFSP4076005005



**SteffesGroup.com**

Steffes Group, Inc., 2000 Main Avenue East, West Fargo, ND 58078 | 701.237.9173



TERMS: All items sold as is where is. Payment of cash or check must be made sale day before removal of items. Statements made auction day take precedence over all advertising. \$35 documentation fee applies to all titled vehicles. Titles will be mailed. Canadian buyers need a bank letter of credit to facilitate border transfer. Scott Steffes ND81, Bob Steffes ND82, Brad Olstad ND319, Max Steffes ND999, Justin Ruth ND2019

